

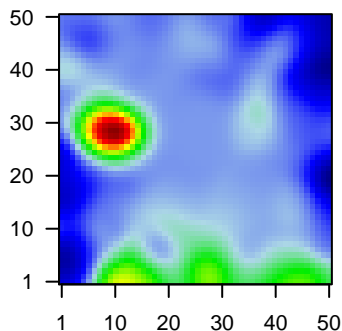
MPI-195

Global Summary

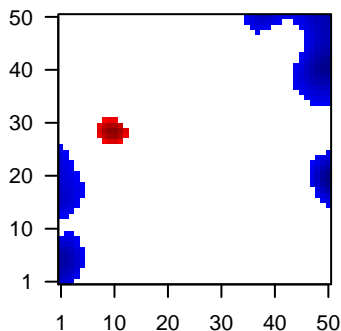
%DE = 0.08
 # genes with fdr < 0.2 = 1224 (542 + / 682 -)
 # genes with fdr < 0.1 = 907 (386 + / 521 -)
 # genes with fdr < 0.05 = 746 (307 + / 439 -)
 # genes with fdr < 0.01 = 513 (192 + / 321 -)
 # genes in genesets = 13152

<FC> = 0
 <t-score> = -0.71
 <p-value> = 0.18
 <fdr> = 0.92

Portrait



Regulated Metagenes



Global Genelist

Rank	ID	log(FC)	fdr	p-value	Description
1	266_s_at	-2.2	2e-16	6e-14	44 x 49 CD24 molecule [Source:HGNC Symbol;Acc:HGNC:1645]
2	34210_at	-2.36	2e-16	6e-14	49 x 18 CD52 molecule [Source:HGNC Symbol;Acc:HGNC:1804]
3	39318_at	-1.92	2e-16	6e-14	46 x 49 T cell leukemia/lymphoma 1A [Source:HGNC Symbol;Acc:HGNC:1645]
4	44790_s_at	-1.92	2e-16	6e-14	42 x 49 RUN and cysteine rich domain containing beclin 1 interacting
5	201850_at	-1.57	2e-16	6e-14	4 x 3 capping actin protein, gelsolin like [Source:HGNC Symbol;Acc:HGNC:1645]
6	203185_at	-1.59	2e-16	6e-14	0 x 15 Ras association domain family member 2 [Source:HGNC Symbol;Acc:HGNC:1645]
7	203233_at	-2.11	2e-16	6e-14	49 x 20 interleukin 4 receptor [Source:HGNC Symbol;Acc:HGNC:601]
8	203509_at	-1.86	2e-16	6e-14	49 x 40 sortilin related receptor 1 [Source:HGNC Symbol;Acc:HGNC:1645]
9	203555_at	-1.9	2e-16	6e-14	1 x 43 protein tyrosine phosphatase, non-receptor type 18 [Source:HGNC Symbol;Acc:HGNC:1645]
10	204057_at	-1.64	2e-16	6e-14	49 x 19 interferon regulatory factor 8 [Source:HGNC Symbol;Acc:HGNC:1645]
11	204440_at	-1.74	2e-16	6e-14	0 x 8 CD83 molecule [Source:HGNC Symbol;Acc:HGNC:1703]
12	204581_at	-2.18	2e-16	6e-14	49 x 41 CD22 molecule [Source:HGNC Symbol;Acc:HGNC:1643]
13	204891_s_at	-2.23	2e-16	6e-14	49 x 39 LCK proto-oncogene, Src family tyrosine kinase [Source:HGNC Symbol;Acc:HGNC:1645]
14	204912_at	-1.78	2e-16	6e-14	0 x 4 interleukin 10 receptor subunit alpha [Source:HGNC Symbol;Acc:HGNC:1645]
15	204961_s_at	-2.35	2e-16	6e-14	49 x 39 neutrophil cytosolic factor 1 [Source:HGNC Symbol;Acc:HGNC:1645]
16	205242_at	-2.3	2e-16	6e-14	0 x 3 C-X-C motif chemokine ligand 13 [Source:HGNC Symbol;Acc:HGNC:1645]
17	205484_at	-2.16	2e-16	6e-14	43 x 44 signaling threshold regulating transmembrane adaptor 1 [Source:HGNC Symbol;Acc:HGNC:1645]
18	205504_at	-1.81	2e-16	6e-14	43 x 36 Bruton tyrosine kinase [Source:HGNC Symbol;Acc:HGNC:11]
19	205681_at	-1.76	2e-16	6e-14	0 x 4 BCL2 related protein A1 [Source:HGNC Symbol;Acc:HGNC:1645]
20	205861_at	-2.9	2e-16	6e-14	0 x 23 Spi-B transcription factor [Source:HGNC Symbol;Acc:HGNC:1645]

Global Geneset Analysis

Rank	GSZ	p-value	#all	Geneset
<i>Overexpressed</i>				
1	13.44	NULL	75	GSEA C2TARTE_PLASMA_CELL_VS_B_LYMPHOCYTE_UP
2	12.44	NULL	77	LymphomAARTE_Plasma cell signature
3	11.62	NULL	2747	ChromatinAcetylation_peripheral_blood_12_EnhBiv
4	11.49	NULL	3001	ChromatinAcetylation_peripheral_blood_14_ReprPCWk
5	11.07	NULL	2405	ChromatinAcetylation_peripheral_blood_13_ReprPC
6	10.97	NULL	1035	CC endoplasmic reticulum
7	10.42	NULL	518	GSEA C2MILLI_PSEUDOPODIA_HAPTOTAXIS_DN
8	10.29	NULL	2602	ChromatinAcetylation_killer_cells_peripheral_blood_12_EnhBiv
9	10.21	NULL	241	CC endoplasmic reticulum lumen
10	10.02	NULL	3150	ChromatinAcetylation_monocytes_peripheral_blood_13_ReprPC
11	9.87	NULL	216	GSEA C2PASQUALUCCI_LYMPHOMA_BY_GC_STAGE_UP
12	9.69	NULL	1700	ChromatinAcetylation_peripheral_blood_11_BivFink
13	9.57	NULL	3272	ChromatinAcetylation_monocytes_peripheral_blood_14_ReprPCWk
14	9.25	NULL	683	CC endoplasmic reticulum membrane
15	9.16	NULL	64	GSEA C2SHAFER_IRF4_TARGETS_IN_PLASMA_CELL_VS_MATURE_B
16	9.13	NULL	2515	ChromatinAcetylation_killer_cells_peripheral_blood_13_ReprPC
17	9.01	NULL	96	GSEA C2SHAFER_IRF4_TARGETS_IN_MYELOMA_VS_MATURE_B_LY
18	8.96	NULL	3184	ChromatinAcetylation_monocytes_peripheral_blood_12_EnhBiv
19	8.65	NULL	3270	CC integral component of membrane
20	8.55	NULL	3168	LymphomAARTE_Repressed
<i>Underexpressed</i>				
1	-24.29	NULL	56	GSEA C2KLEIN_PRIMARY_EFFUSION_LYMPHOMA_DN
2	-18.85	NULL	589	Colon CancerTCGA-expr_kmeans_E_CIMP_H_UP_Cluster4_DN
3	-18.06	NULL	24	MelanomaTCGA_B-cell specific genes-melanoma
4	-17.01	NULL	261	GSEA C2POOLA_INVASIVE_BREAST_CANCER_UP
5	-16.03	NULL	693	ChromatinAcetylation_peripheral_blood_3_TxFink
6	-15.82	NULL	355	ReferenceSignatureImmune system
7	-15.79	NULL	1312	GSEA C2PUJANA_ATM_PCC_NETWORK
8	-15.73	NULL	35	GSEA C2TARTE_PLASMA_CELL_VS_B_LYMPHOCYTE_DN
9	-15.67	NULL	42	ReferenceSignatureT1_3_B-cells
10	-15.64	NULL	51	GSEA C2MORI_LARGE_PRE_BII_LYMPHOCYTE_DN
11	-15.41	NULL	34	LymphomAARTE_B-cell signature
12	-15.28	NULL	229	GSEA C2QI_PLASMACYTOMA_UP
13	-14.67	NULL	3767	ChromatinAcetylation_peripheral_blood_6_EnhG
14	-14.08	NULL	1527	GSEA C2PASQUALUCCI_LYMPHOMA_BY_GC_STAGE_UP
15	-14.04	NULL	121	GSEA C2PASQUALUCCI_LYMPHOMA_BY_GC_STAGE_DN
16	-13.89	NULL	45	LymphomAARTE_BCR_cluster
17	-13.62	NULL	83	MelanomaTCGA_melanoma Immune_high
18	-13.6	NULL	447	Glioma_ScoV_0.999_Sturm_E4_Mesenchymal_RTK_I_PDGFR_A_DN
19	-13.42	NULL	265	GSEA C2WALLACE_PROSTATE_CANCER_RACE_UP
20	-13.23	NULL	429	GSEA C2SMID_BREAST_CANCER_NORMAL_LIKE_UP

p-values

